



QINEO QinTron 400, 500, 600  
QINEO QinTron 400, 500, 600 Pulse

NEW!!

Simply welding:  
Powerful, flexible, reliable

**CLOOS**

Weld your way.

[www.cloos.de](http://www.cloos.de)

# QinTron – simply the robust.

Brave the rough conditions for indoor and outdoor applications – the QinTron is characterised by high-quality components and a robust design. See for yourself!







## Multiprocess – live and in colour.

Realise different welding processes and applications with one machine – we offer the right solution for every requirement.



## Stick electrode welding

Weld demanding seams with stick electrode already in the basic equipment. The integrated synergy characteristic curves were optimised for basic, Rutil- and CEL stick electrodes.



## Control Weld

MIG/MAG welding is the key skill of the QinTron. A robust MIG/MAG arc ensures the perfect solution of the welding task. As an option, extensions such as synergy-based programs can be integrated.



## Gouging

Gouging turns the QinTron into a real multiprocess system. Remove all points of failure with stick up to 6 mm and then solve the task with the same welding system.



## Rapid Weld

Rapid Weld is a focused and very stable high-capacity spray arc. It provides advantages wherever high penetration depths and a safe root fusion are required.

**NEW!!**



## TIG DC Welding (with Liftstart)

TIG DC welding is also easy for the QinTron. The Liftstart function (contact ignition) guarantees a safe welding start.



## Vari Weld

The main advantage of Vari Weld is a very directionally stable and powerful arc. Thus relatively high welding speeds with deep penetration can be achieved.

**NEW!!**

**Applications**

- Thin materials > 1 mm
- Manual and automated welding

**Properties**

- Stable arc
- Arc length control
- Low spatter
- Optimum side wall joints

**Material**

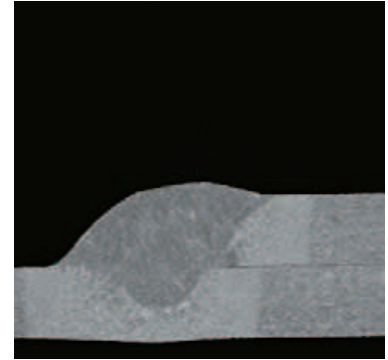
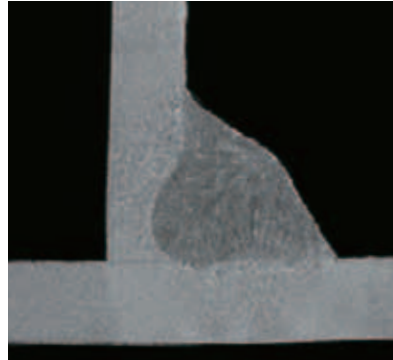
- General structural steel, high-strength steel, chrome-nickel steel, aluminium, coated plates

**Technical data**

Material	S235	S235
Wire thickness $\varnothing$ [mm]	1.0	1.0
Wire feed $V_{\text{pr}}$ [m/min]	4.2	5.0
Weld speed $V_{\text{sr}}$ [cm/min]	55	70
Voltage U [V]	17.3	17.4
Current I [A]	128	126
Plate thickness [mm]	1,5 / 1,5	1.5 / 1.5

## Control Weld

### MIG/MAG standard arc

**Applications**

- Thick materials > 4 mm
- Manual and automated welding

**Properties**

- Deep penetration with a high deposition rate
- High arc pressure
- Adjustable penetration profile
- Seams which are accessible on one side can be welded

**Material**

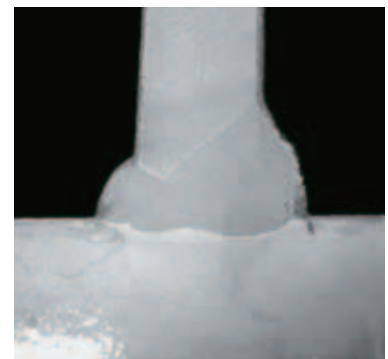
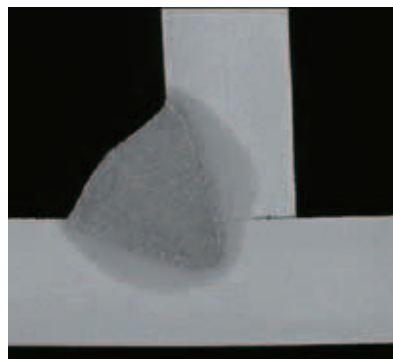
- Steel, high-strength steel, stainless steel

**Technical data**

Material	S235	S235
Wire thickness $\varnothing$ [mm]	1.2	1.2
Wire feed $V_{\text{pr}}$ [m/min]	12.5	11.5
Weld speed $V_{\text{sr}}$ [cm/min]	52	30
Voltage U [V]	33.0	28.5
Current I [A]	360	315
Plate thickness [mm]	10.0 / 10.0	8.0 / 10.0

## Rapid Weld

### MIG/MAG forced arc



### Applications

- MIG Pulsed arc welding & MIG Brazing of thin materials > 1 mm
- Manual and automated welding

### Properties

- Optimum weld pool control
- Very low spatter drop transfer
- Penetration depth independent from torch distance

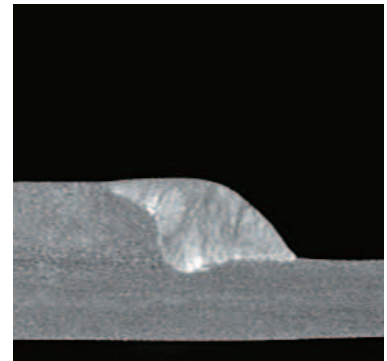
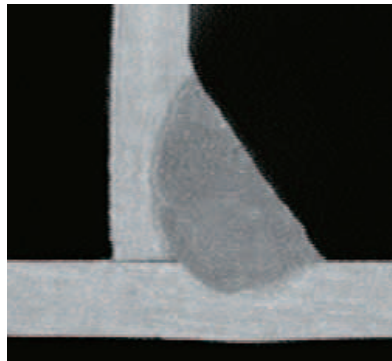
### Material

- General structural steel, high-strength steel, chrome-nickel steel, aluminium, coated plates

### Technical data

Material	AlSi5	AlSi5
Wire thickness $\varnothing$ [mm]	1.2	1.2
Wire feed $V_D$ [m/min]	4.0	4.0
Weld speed $V_S$ [cm/min]	80	100
Voltage U [V]	17.5	19.0
Current I [A]	80	90
Plate thickness [mm]	1.5 / 1.5	1.5 / 1.5

## Vari Weld MIG/MAG Pulsed arc



### Applications

- Available for all characteristic curves
- Manual and automated welding

### Properties

- Very good weld pattern, similar to TIG weld
- Lower heat input
- Better control of the melt pool

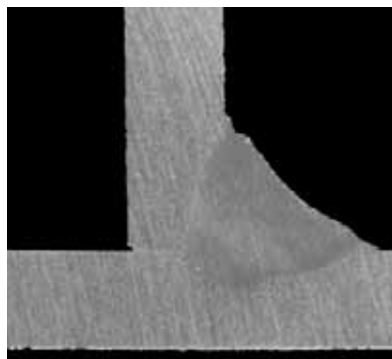
### Material

- Aluminium, steel, high-strength steel, chrome-nickel steel

### Technical data

Material	AlMg3	AlMg3
Wire thickness $\varnothing$ [mm]	1.2	1.2
Wire feed $V_D$ [m/min]	4.8	8.5
Weld speed $V_S$ [cm/min]	50	45
Duo Pulse frequency [Hz]	1.2	3.7
Plate thickness [mm]	4	8

## Duo Pulse MIG/MAG Duo pulsed arc





# good reasons for a QinTron

## Efficient

Weld any workpiece at economic conditions - we offer you an excellent price/performance ratio and enormous energy-saving possibilities due to the latest inverter technology and stand-by operation < 30W.

## Flexible

Realise individual extensions and retrofits at any time - the modular design allows to have different welding processes and applications in one machine.

## User-friendly

Benefit from a comfortable operating concept which automatically adapts to the user's requirements – QinTron stands for easy, quick and intuitive handling.

## Reliable

Trust in many years of know-how together with highest innovation power – as technology leader we guarantee maximum performance in proven CLOOS quality.

## Robust

Brave the rough conditions for indoor and outdoor applications – the QinTron is characterised by high-quality components and a robust design.

Further information under:





Welding system for TIG DC- and stick electrode welding as well as gouging..

**Possible equipment:**

- Basic welding machine 400, 500 or 600A
- Stick electrode holder
- Earth cable

# QinTron – simply flexible.

Choose between the capacity classes 400, 500 and 600A. Due to the modular system you make the QinTron to be your individual welding system. Because of the Autolink function (3 x 380V to 460V) you can use the machine everywhere in the world.



Welding system for MIG/MAG, TIG DC- and stick electrode welding as well as gouging.

#### Possible equipment:

- Basic welding machine 400, 500 or 600A
- Wire drive unit
- Welding torch MIG/MAG:
- Earth cable



Welding system for MIG/MAG, TIG DC- and stick electrode welding as well as gouging.

#### Possible equipment:

- Basic welding machine 400, 500 or 600A
- Wire drive unit
- Water cooling
- Carriage with bottle holder
- MIG/MAG welding torch, TIG welding torch
- Earth cable

# SMART: Intelligent identification

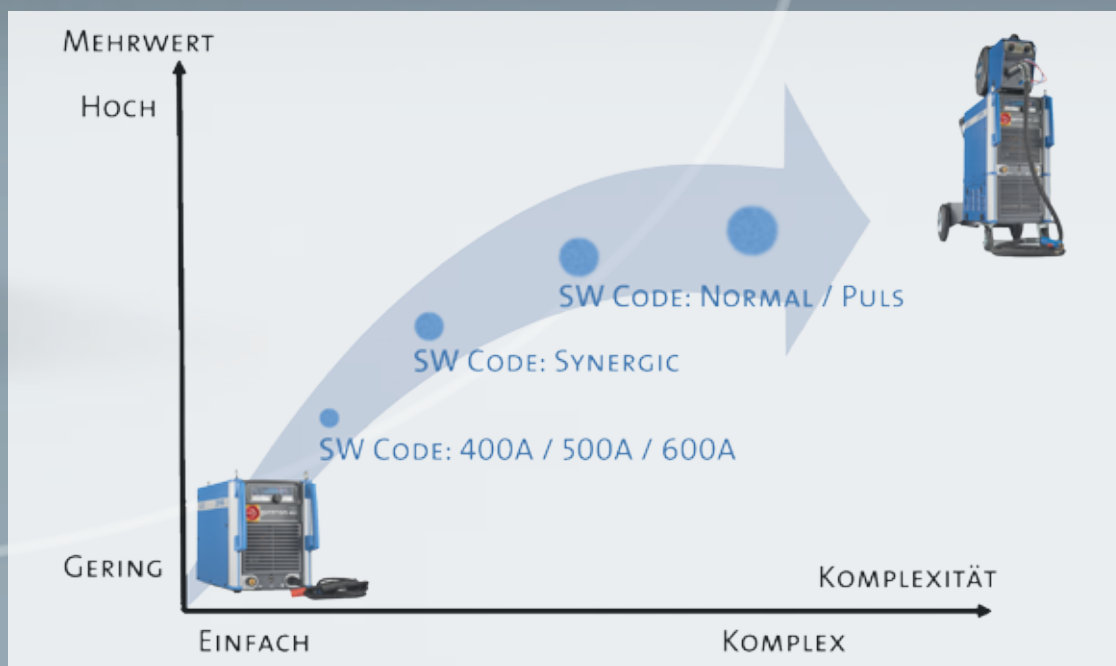
- Separate wire drive
- Push-Pull welding torch
- Remote Control (RC 101 / RC 102)
- Separate twin wire drive
- Welding carriage





# Simply more: Upgrade via software key

- Capacity range 400 / 500 / 600 A
- MIG/MAG Pulse and Duo-Pulse welding
- Software upgrade



## Power inside

- Inverter technology 400, 500 or 600A
- Two-knob operation for wire drive and voltage
- Can be used with a generator
- Mains voltage compensation
- Operating panel:
  - Basic operating panel in the welding machine
  - MIG/MAG welding via wire drive panel
- Optionally: Synergic operation



## Wire drive unit: Endless drive!

### Standard wire drive unit with:

- 2+2 roller drive
- Jack ring
- Euro central connection
- Suitable for 300 mm wire rollers
- Remote control and welding carriage plug
- Optionally: 4 roller drive



## Transportable: Your mobile welding machine!

### Choose between:

- Stands (standard), simple rolls and trolley with gas bottle holder
- Rubber feet or rolls for the wire drive unit



## Make your daily work easier!

- Mains supply cable with mains plug as standard
- Remote control
- Torch and tool tray
- Tool box (if the rack for water cooling is not used)
- Filter mat
- Connection cable assemblies in different lengths
- Earth cable with pliers



## The right tool in your hand!

- Ergonomic welding torches for MIG/MAG and TIG welding in different capacity classes
- Stick electrode holder
- Gouging torch
- Simple welding carriage with start/stop function



## Cooling: Being always cool!

- Gas cooling as standard
- Water cooling as option
- Retrofit possible via service-friendly rack toolbox



## Welding machine seminars

### Information and operation

- Product seminars
- Welding technology



### Adjustment Welding Power Sources

- QINEO QinTron



## Further seminars

### Welding processes

- Rapid Weld, Vari Weld, Duo Pulse



### Software

- Validation



### Service Welding Machines

- QINEO QinTron





## QinTron – simply reliable.

Trust on the proven CLOOS quality – with solid technology and maximum capacity you are perfectly prepared for the rough daily work.

Technical data	QinTron 400 Qintron 400 Pulse	QinTron 500 Qintron 500 Pulse	QinTron 600 Qintron 600 Pulse
Open circuit voltage	64V	64V	64V
Mains voltage	380V-460V	380V-460V	380V-460V
Connection cable	4 x 6 mm <sup>2</sup>	4 x 6 mm <sup>2</sup>	4 x 6 mm <sup>2</sup>
Mains fuse/400V slow-acting	35A	35A	35A
Type of protection	IP 23	IP 23	IP 23
Insulation class	H	H	H
Type of cooling	F	F	F
Dimensions L/W/H (basic machine)	740 x 350 x 430 mm	740 x 350 x 430 mm	740 x 350 x 430 mm
Weight (basic machine)	50.7	50.7	50.7

### Same power in the processes MIG/MAG, TIG ( with Liftstart), stick electrode and gouging

Welding current	20A/15V - 400A/36V	20A/15V - 500A/40V	20A/15V - 600A/44V
Welding current 40% duty cycle	—	—	600A
Welding current 60% duty cycle	400A	500A	500A
Welding current 100% duty cycle	400A	400A	400A





## Weld your way!

Providing added value for our customers! – This is the motivational force behind our 700 employees. We are constantly raising the bar by pushing ourselves to provide innovative welding processes and solutions that will contribute to the long-term commercial success of your company!

Our process competence is at the forefront in welding and cutting of various ferrous and non-ferrous metals. We offer our customers individual solutions which are optimised and adapted specifically to your product and production requirements. Leadership and competence equals process automation and welding at its best.



Whatever your needs are, we “Weld your way.”  
CLOOS develops, manufactures and delivers innovative solutions in more than 40 countries worldwide.

With QINEO, the new generation of welding machines for manual and automated applications, and QIROX, the system for automated welding and cutting, our product range covers the entire spectrum of arc welding technology. Our product portfolio includes intelligent software, sensor and safety technology solutions – all of which are customised to meet your specific needs and requirements! CLOOS provides full service solutions – all from a single source!

## Weld with CLOOS .



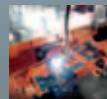
... all types of metal!



... all material thicknesses from 0.5 to 300mm!



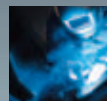
... using innovative welding processes!



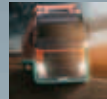
... manually or automated,  
just as you need it!



... efficiently and individually!



... and profit from many additional services!



... in all industries!



... all over the world!

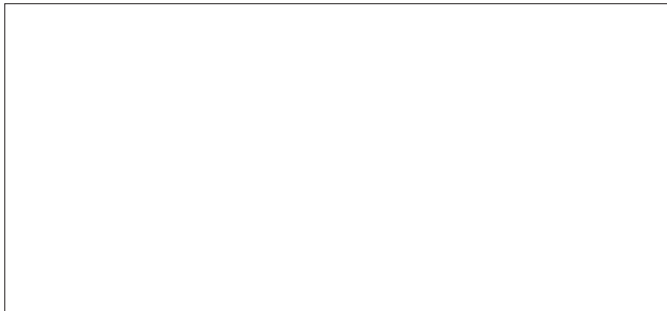


... to your utter satisfaction!



... and benefit from almost 100 years  
of welding experience!

# All over the world!



Further information under:



Carl Cloos Schweisstechnik GmbH  
Industriestrasse 22-36  
35708 Haiger  
GERMANY

Telephone +49 (0)2773 85-0  
Telefax +49 (0)2773 85-275  
E-Mail [info@cloos.de](mailto:info@cloos.de)  
[www.cloos.de](http://www.cloos.de)

# CLOOS

## **Austria**

CLOOS Austria GmbH,  
2362 Biedermannsdorf  
[www.cloos.co.at](http://www.cloos.co.at)

## **Belgium/Netherlands/Luxembourg**

CLOOS Benelux N.V.  
3300 Tienen  
[www.cloos.be](http://www.cloos.be)

## **Brazil**

CLOOS Técnica em Soldagem  
Guarulhos / São Paulo  
07240-180  
[www.cloos.com.br](http://www.cloos.com.br)

## **China**

CLOOS Welding Technology (Beijing) Ltd.  
Beijing 101113  
[www.cloos.cn](http://www.cloos.cn)

## **Czech Republic**

CLOOS Praha GmbH  
25242 Jesenice  
[www.cloos.cz](http://www.cloos.cz)

## **Great Britain**

CLOOS UK Ltd.  
Staffordshire WS11 1DB  
[www.cloos.co.uk](http://www.cloos.co.uk)

## **India**

CLOOS India Welding Technologies Pvt Ltd.  
PUNE 411 014  
[www.cloos.in](http://www.cloos.in)

## **Mexico**

CLOOS Robotic de Mexico  
Apodaca, N.L. México  
CP. 66600  
[www.cloos.com.mx](http://www.cloos.com.mx)

## **Russia**

OOO CLOOS Vostok  
125445 Moskau  
[www.cloos.ru](http://www.cloos.ru)

## **Switzerland**

CLOOS Electronic GmbH  
2400 Le Locle  
[www.cloos.ch](http://www.cloos.ch)

## **Turkey**

CLOOS Kaynak Teknik Sanayi Ltd. Sti.  
41400 Gebze Kocaeli Türkiye  
[www.cloos.com.tr](http://www.cloos.com.tr)

## **USA**

CLOOS Robotic Welding Inc.  
Schaumburg, Illinois 60193  
[www.cloosrobot.com](http://www.cloosrobot.com)

**Weld your way.**